

MAX-I

72 mm Pole Base System

A 72 mm Pole Base System of high grade aluminium extrusions are designed to be attached with an aluminium die-cast arm to float wood pieces and provide light weight screens to enhance workspace efficiency and productivity.

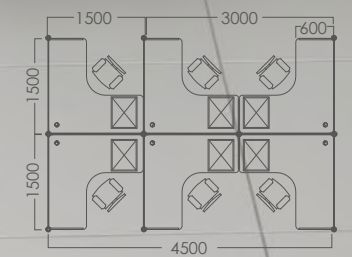


Max-I
L-SHAPED
WORKSTATION



Harmonious & Ergonomic Design

Characterised by a look that breaks away from traditional norms. Its fundamental feature is a leg of stable and emotive design; wide broad leg rise to meet the ergonomic shapes of the worktops. Flexibility in configurations is increased tremendously with the 72 mm diameter pole in 2 or 4 ways that allow the panels to join in 4 positions and the arms are able to hold 8 angles at various height.



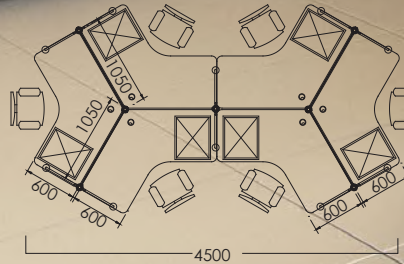
Other configurations:



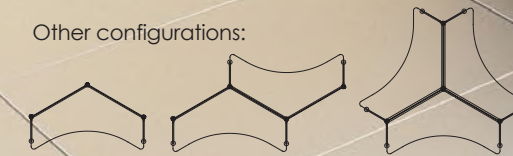
Max-I
120-DEGREE
WORKSTATION

**Comfortable Design
for a Team Space**

Max-I 120-degree configuration offers inviting workstations and comfortable personal space. The minimal structure and translucent elements make a space feel larger and more open. Stability feature is enhance with its 500 mm length aluminium die-cast legs which provide rigidity to the workstation. On top of that, levelling studs are attach for 1" levelling possibility.



Other configurations:

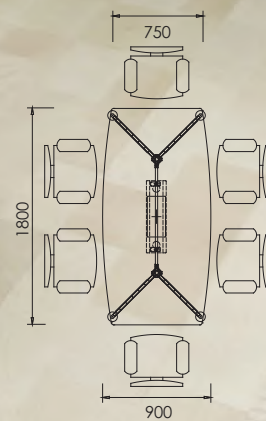




Max-I
**CONFERENCE
TABLE**

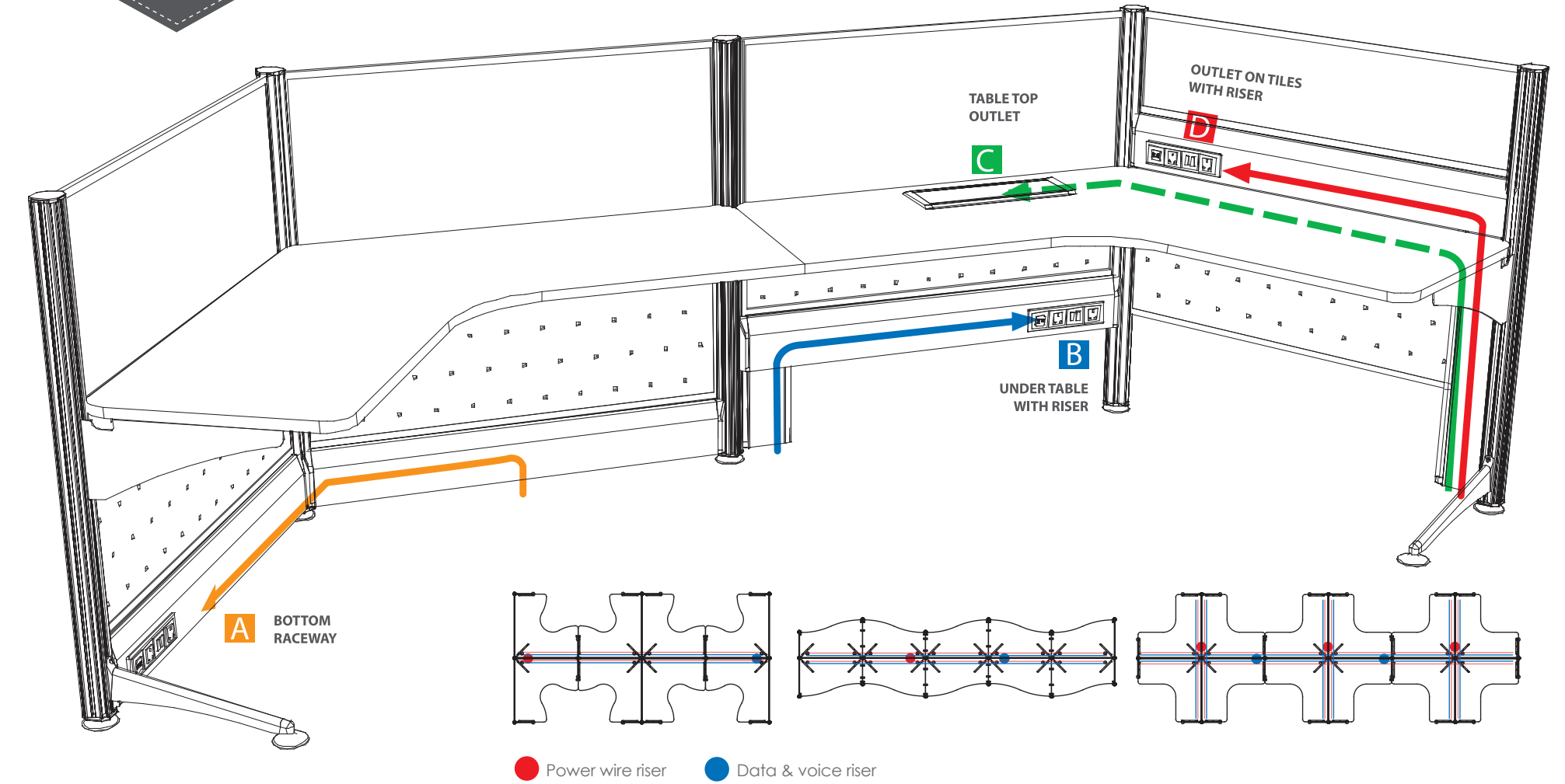
Cool and Sleek Design

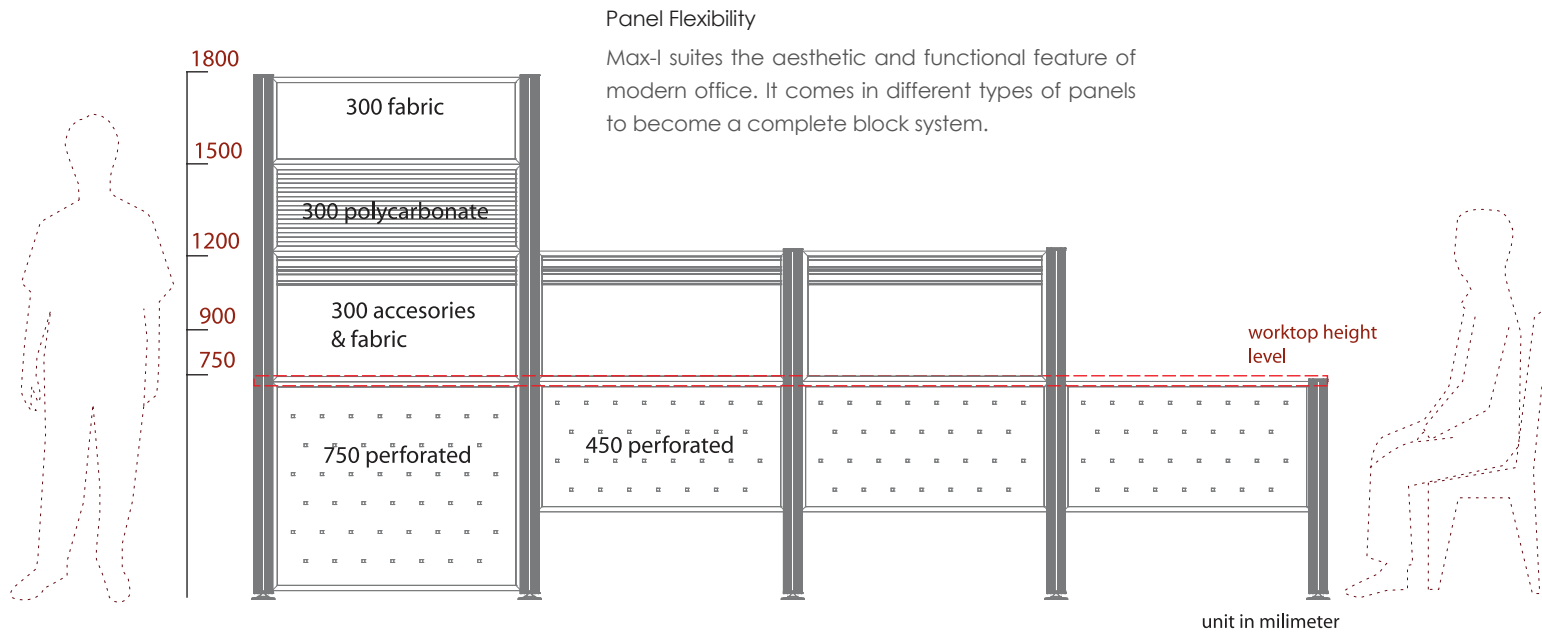
A sleek example of cool minimalism, this conference table celebrates materials in their purest form, combining an austere aluminium frame with laminate table top.



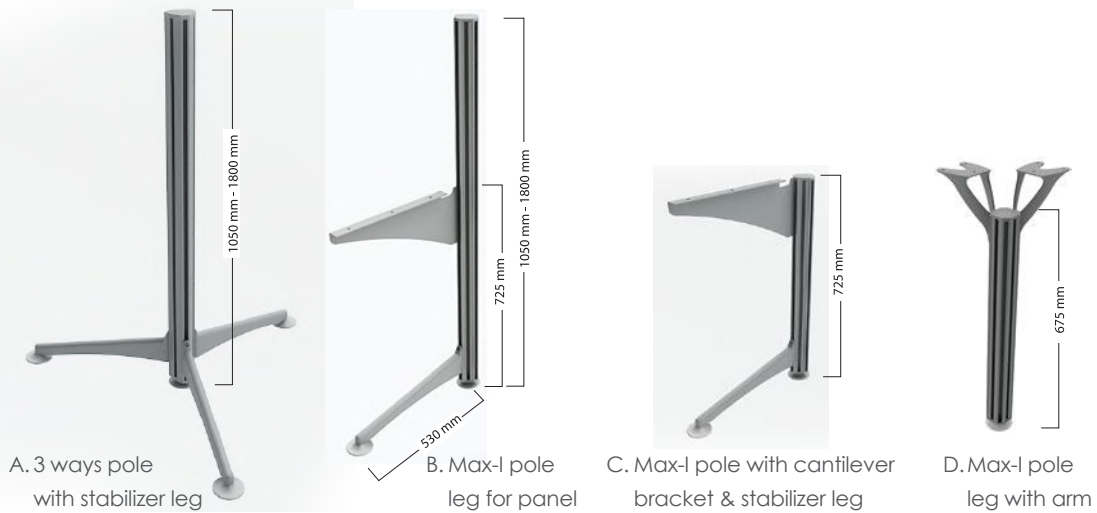
Max-I
**WIRE
MANAGEMENT**

This pole base system is the first to be able to accommodate rows of 12 workstations wiring for voice/data and power in one single entry point thus increasing its flexibility as a first choice for most call centres. Added to its flexibility are raceway covers below screens and mid-way or above tops as power panels to accommodate most outlets for electrification purpose. In fact, any desired positions is possible.





Pole applications:



Type of pole:

